

TE100-PC16R **10/100Mbps PCMCIA Ethernet Card with XpressPort**

The perfect solution for connecting to today's high-speed LAN through your laptop computer is TRENDnet's TE100-PC16R Fast Ethernet Card. The TE100-PC16R supports full-duplex mode that makes data rates up to 200Mbps. Plug-and-Play compatible, the TE100-PC16R provides easy installation that is done in minutes. And the TE100-PC16R is fully compatible with your existing 10Mbps Ethernet. It guarantees easy installation and extra low power consumption with power-down mode and broad compatibility. With XpressPort feature, users can prevent from lost or broken cable connectors and jacks. You will be hassle-free and dongle-free in connecting to information with the TE100-PC16R.



FEATURES

- Inserts to top PCMCIA type II slot and leaves bottom slot available for other
- PCMCIA devices
- PCMCIA standard compliant
- 10/100Mbps data rates auto-negotiation
- Integrated RJ-45 XpressPort for dongle/coupler-free connection
- Full-duplex mode that doubles the network speed
- Supports Windows 95/98/ME/NT/2000/XP, Linux
- PC Card hot swap
- Ultra low power consumption
- Innovative power-down mode
- Compatible with extensive notebook models
- 5-years warranty

BENEFITS

- **User Friendly:**
Just plug the card into your workstation and it's ready to go!
- **Flexibility:**
Supports all major Network Operating Systems.
- **Compatibility:**
Compatible with extensive notebook computers.
- **Low Cost:**
Integrated XpressPort reduces user down time and eliminates dongle/jack replacement.



TE100-PC16R

10/100Mbps PCMCIA Ethernet Card with XpressPort

SPECIFICATIONS

Standards:

- IEEE 802.3 for 10Base-T, IEEE 802.3u for 100Base-TX,

Cabling:

- CAT3, 4, 5 UTP/STP for 10Base-T, 100 meters max. CAT5 UTP/STP for 100Base-TX, 100 meters max.

Card & Socket Service Support:

- PC Card standard ver. 2.0 and up

Network Drivers:

- Windows for Workgroup 3.11, Windows 95/98/ME/NT/2000/XP, Novell Net-Ware 3.x & 4.x Client, Personal NetWare, NetWare Microsoft LAN Manager, Artisoft LANtastic, IBM LAN, DEC Pathworks, FTP, PC/TCP, Packet Driver, Linux

Diagnostic LEDs:

- Power/Transmitting, Link/Receiving, 10/100Mbps

Dimensions:

- 120 x 54 x 16 mm (4.72 x 2.13 x 0.63 inch)

Temperature:

- Operating: 0° ~ 65° C (32° ~ 149° F)
- Storage: 0° ~ 70° C (-4° ~ 158° F)

Humidity:

- 10 % to 95 % non-condensing

Power Consumption:

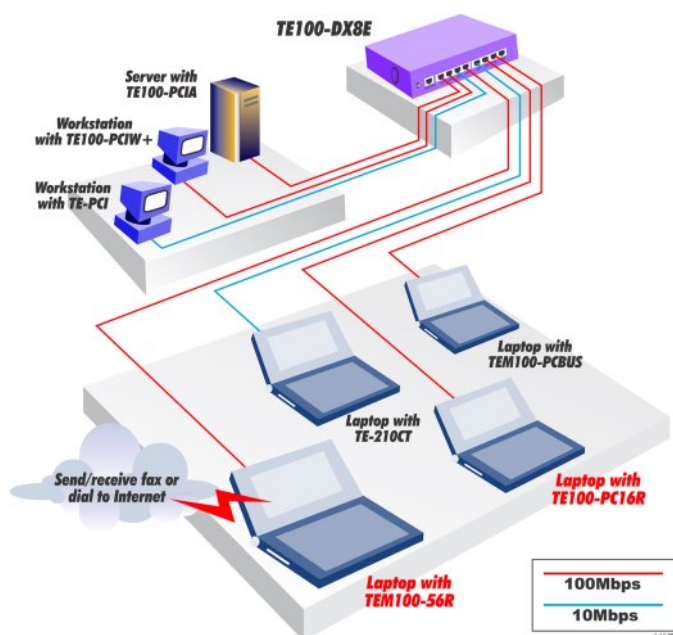
- Operation: +5VDC (normal).
- 10Mbps: 190mA, max.
- 100Mbps: 260mA, max.

Certifications:

- FCC, UL, CE



NETWORKING SOLUTIONS



To Order Please Call:
1-888-326-6061

PRODUCT INFORMATION

- **TE100-PC16R:** 10/100Mbps PCMCIA Ethernet Card with XpressPort
- **TE100-PCBUSR:** 10/100Mbps PCMCIA 32-bit CardBus Ethernet Card with XpressPort
- **TEM100-56R:** 10/100Mbps Fast Ethernet + 56Kbps Fax Modem Card with XpressPort

ORDERING INFORMATION

TRENDware International, Inc.
3135 Kashiwa Street
Torrance, CA. 90505. USA
Tel: 310-891-1100
Fax: 310-891-1111
Web: www.TRENDNET.com
Email: sales@trendware.com

